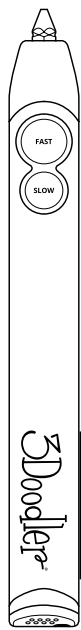
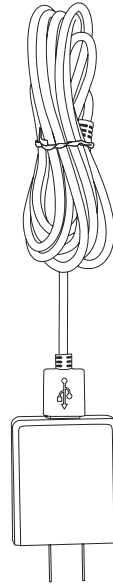
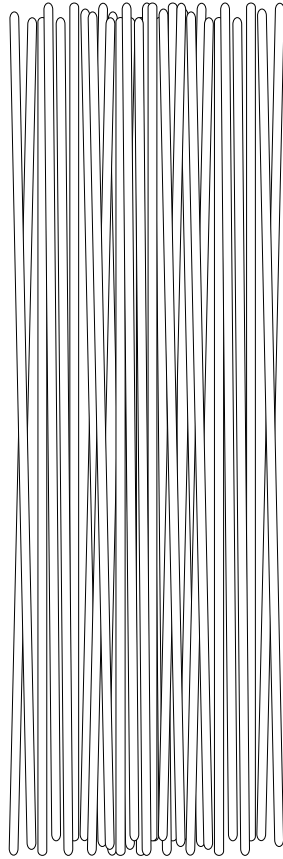


## WHAT'S INCLUDED



**3Doodler Create+ Pen**

**75 strands of 3Doodler 3mm PLA Refills**  
Colors may vary

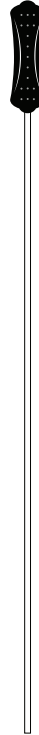


**Power Adapter**



**Nozzle Spanner**

**Unblocking Tool**



## SECTION 1: WARNINGS

<b>WARNINGS</b>		
<ul style="list-style-type: none"> <li>- The Nozzle of the 3Doodler Create+ can become hot. DO NOT touch the Nozzle, or you may be burned!</li> <li>- DO NOT allow the Nozzle near or in contact with flammable materials.</li> <li>- Inform others in the area that the Pen is hot and should not be touched.</li> </ul>	<p>DO NOT use the 3Doodler Create+ near bathtubs, showers, basins or other vessels containing water. This could result in death due to electric shock.</p>	<p><b>WARNING:</b> This 3D Printing Device, when used with a styrene filament (ABS / HIPS / or PC-ABS), can expose you and others in the same room to styrene, which is a chemical known to the State of California to cause cancer. For more information, go to <a href="http://www.P65Warnings.ca.gov">www.P65Warnings.ca.gov</a>. ALWAYS OPERATE YOUR 3D PRINTING DEVICE IN A WELL-VENTILATED AREA.</p>
<p>Unplug and set the Control Switch to OFF when not in use or before storing.</p>	<p>The 3Doodler Create+ should only be used with 3Doodler Create+ plastic filament. Misuse of your 3Doodler Create+, setting your pen to the wrong heating temperature, or use of non-approved plastic filament or other materials may result in damage to your pen or injury to you, and will void your warranty. Injuries to the user may include, but are not limited to, harm sustained from inhaling substances that are not suitable for heating; or burns from flammable materials used in the 3Doodler Create+.</p>	
<p>Allow the Nozzle to cool completely before storing.</p>		
<p>The Unblocking Tool can become hot. DO NOT touch the metal part of the Unblocking Tool after using it to clean your 3Doodler Create+ or you may burn yourself!</p>		

**ADULT USE ONLY. KEEP OUT OF REACH OF CHILDREN.**

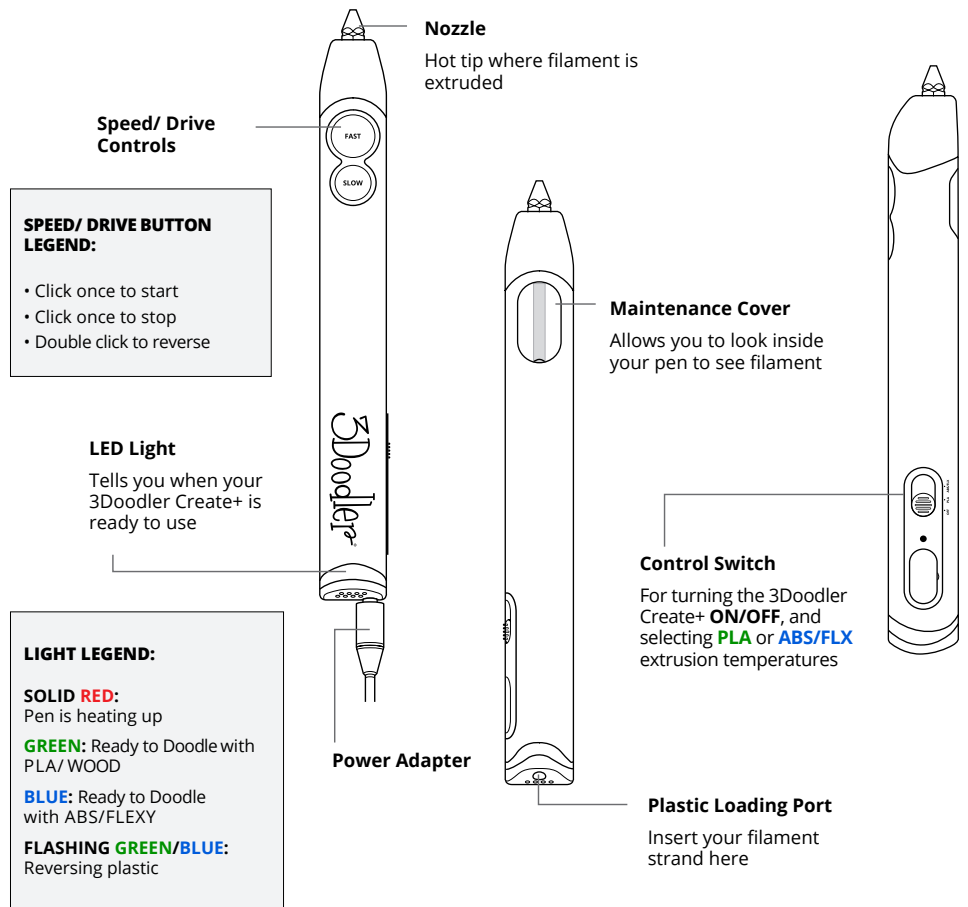
### Disposal of this product

At the end of your 3Doodler Create+'s life, please do not dispose of it in your general household waste. In order to prevent possible harm to the environment or human health from uncontrolled waste disposal, please dispose of your 3Doodler Create+ separately in accordance with local laws and regulations.

For more information on the separate collection systems for waste of electrical and electronic equipment, please contact your local municipal authority. You can also contact the retailer from which you purchased your 3Doodler Create+, who may have a recycling program, or be part of a specific recycling scheme that you can use.

## SECTION 2: GETTING STARTED

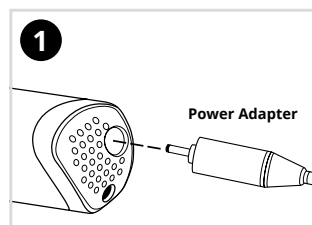
We created this User Manual as a step-by-step guide to get you comfortable with your 3Doodler Create+ and its features. Once you are familiar with these steps, you will be able to Doodle with confidence.



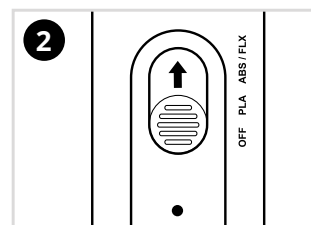
### How it Works:

The 3Doodler Create+ melts plastic filament and uses a motor and gears to push it through the pen's nozzle in a thin line. This process is called extruding or extrusion, and we will refer to it throughout this user manual. Once extruded, the filament cools and hardens quickly, allowing you to draw on surfaces and in the air. This user manual will show you how!

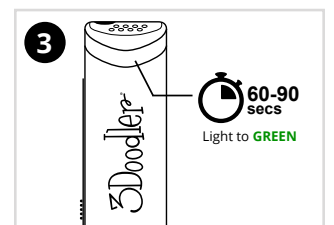
#### STEP 1: Turn on your 3Doodler Create+ and wait for it to heat up



Plug the power adapter into the yellow hole at the back of the pen.

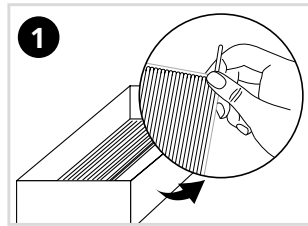


Slide the control switch to **PLA** (or your desired filament setting).

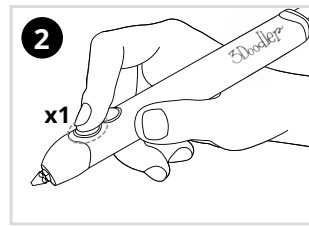


The LED light will glow **RED** while the pen is reaching the required temperature. Once the light has turned **GREEN**, your pen is ready to extrude.

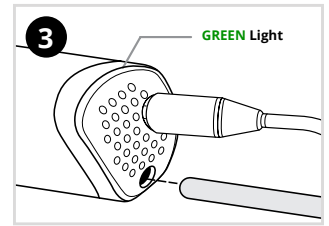
**STEP 2:  
Load and extrude  
plastic**



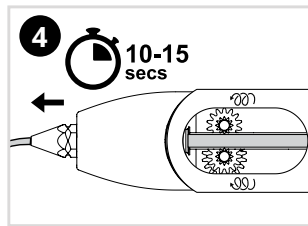
Select one strand of **PLA** plastic (included in the box).



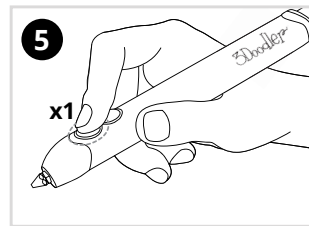
Click either speed button once and release. You will hear the drive gear start.



With the LED light **GREEN**, insert the PLA strand into the plastic loading port.



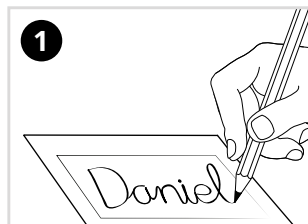
After 10-15 seconds, plastic will begin extruding from the nozzle. Extruded plastic will harden after a few seconds.



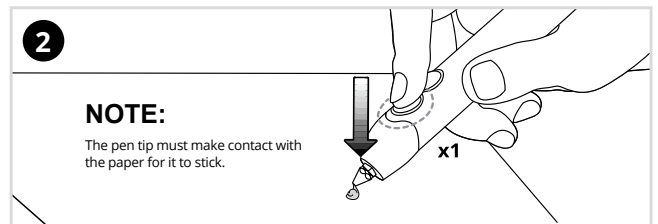
Click either speed button once to stop extruding.

**STEP 3:  
Doodle your name**

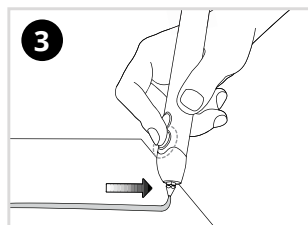
Use the box on page 4 to create your first Doodle!



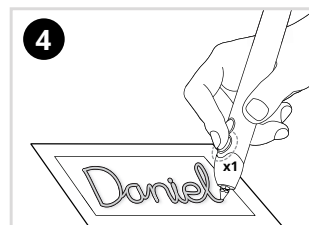
Write your name in the box provided using a marker, pen or pencil. We suggest cursive, with the letters connected.



Click either speed button once. When the plastic starts extruding, push the nozzle down into paper to get the plastic to stick to the surface.



Trace your name in a continuous line by dragging the plastic along the paper as if you were writing with a pencil, with all the letters connected. Keep your movement slow and steady.



When you reach the end of your name, stop extruding by clicking either speed button once.



Bend the corners of your paper to pop your Doodled name off the page.

Your Name:

#MyFirstDoodle

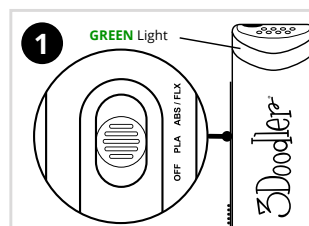
**STEP 4:**  
**Doodle Even More!** ✨

For further guides, projects and inspiration, please refer to:

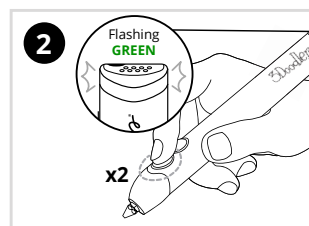
- [learn.the3doodler.com/resources/](https://learn.the3doodler.com/resources/)
- [learn.the3doodler.com/getting-started/](https://learn.the3doodler.com/getting-started/)
- [learn.the3doodler.com/help/](https://learn.the3doodler.com/help/)

Here's everything you need to know about swapping filament strands to change colors or filament type.

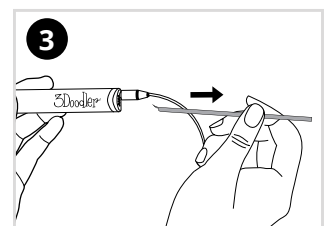
**STEP 5:**  
**Reverse and remove plastic**



With the pen set to **PLA**, wait for the **GREEN** light to come on.



Double click either speed button. The LED light will flash to signal plastic is reversing.

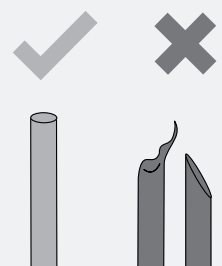


Once Plastic stops reversing, it is safe to remove it from the pen by gently pulling on the back of the strand.

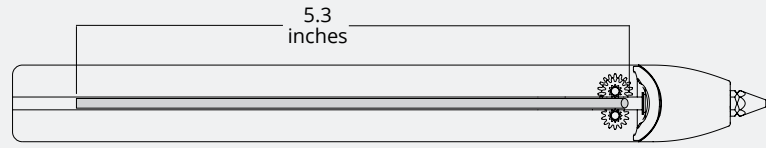
**TIP**

**SNIP THOSE ENDS!**

After removing a plastic strand from the 3Doodler Create+, cut and dispose of any partially melted material at the end of your strand. This will reduce blockages and clogging issues.

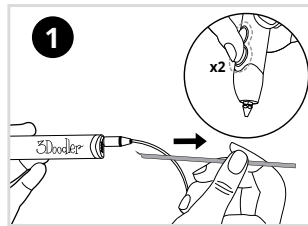


**NOTE:**

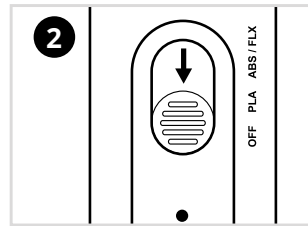


Plastic that is shorter than 5.3 inches cannot be reversed. You should feed it all the way through your 3Doodler Create+ and use it up. Or you can push the plastic out the back of the pen using your unblocking tool - See Section 3, Step 3B.)

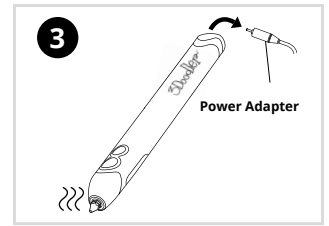
**STEP 6:  
Power Down**



Remove any plastic strand from the pen using the reverse feature (double click either speed button).



Slide the control switch to OFF.



Unplug it from the power source and allow your pen to cool completely before storing.

**NOTE:**

After 5 minutes of inactivity, the 3Doodler Create+ heating system will automatically power down. You will need to press either speed button OR toggle the control switch OFF and then ON again to continue use.

**TAKE A BREAK:**

We recommend powering down and giving your 3Doodler Create+ a 30 minutes break after every 2 hours of continuous use.

**SECTION 3: TROUBLESHOOTING**

**Included Tools**

Before showing you how to troubleshoot issues with your 3Doodler Create+, we want to introduce you to two handy tools included in the box:



**Mini Spanner**

Used for tightening and removing the nozzle.

**Only remove the nozzle when the pen is on and hot.**

**Do not over tighten the nozzle, as you may break it.**



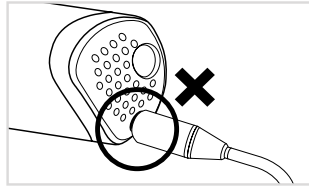
**Unblocking Tool**

Used to push short plastic strands down into the drive gear to help with extrusion, or to push short plastic strands out of the back of the pen.

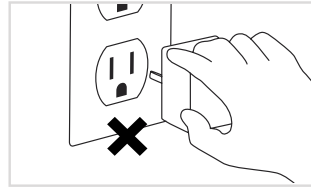
With those introductions over, let's look at some different issues that could arise with your 3Doodler Create+ and steps to get back to Doodling.

1.  
**My pen won't turn on (the LED light isn't on)**

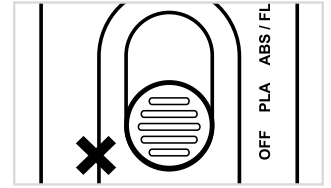
Let's double check the following:



**1A.** Is the end of the power adapter connected to the correct part of the pen?



**1B.** Is the power adapter plugged into a working power outlet?



**1C.** Make sure the control switch on your 3Doodler Create+ is not in the OFF position.

**NOTE:**

If you have a spare power adapter please use it to test your 3Doodler Create+. You will need a DC 5V2A power supply with a 3.5mm barrel. This will help determine if the problem is with your 3D pen or with the included power adapter.

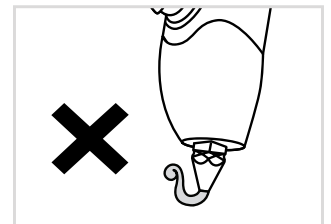
2.  
**Plastic won't stick to the paper, or is curling up around the nozzle**

**Stop extruding and start again using the following instructions:**

When the plastic resumes extruding, push the nozzle firmly down into the paper, allowing the plastic to stick to the paper.

Drag the plastic along the paper or surface in a continuous unbroken line as if you were writing with a pencil.

Keep your movement slow and steady. The plastic should hold to the paper and not curl up around the nozzle.



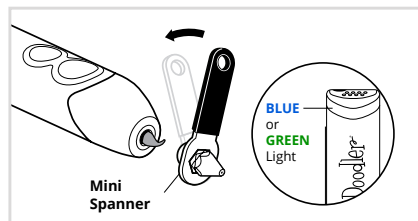
3.  
**Plastic is not extruding from my 3Doodler Create+**

**3A. The plastic is not engaging properly with the drive gear:**

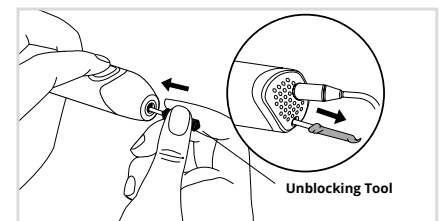
With the pen in drive, gently push on the filament strand until you feel it being pulled through the drive gear on its own.

If the above does not work, reverse the plastic from the pen. ([See Section 4](#)) Snip the ends, put the pen in drive, reinsert the filament, and try again. If the plastic is too short to be reversed from the back of the pen, move to 3B.

**3B. The plastic is too short to be removed from the pen:**

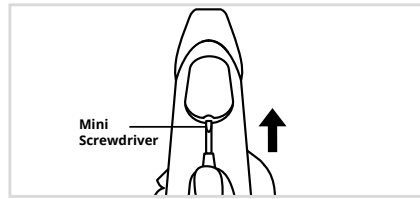


While the pen is on and the nozzle is hot, unscrew the nozzle using the mini spanner.

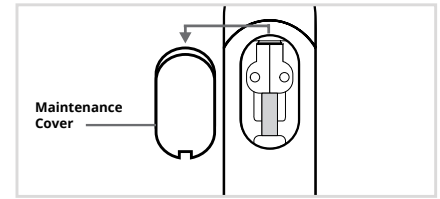


Double click either speed button to set the pen into reverse. Insert the unblocking tool through the front end of the pen and gently push any excess plastic out through the back of the pen.

**3C. The plastic may be wrapped around the drive gear.**



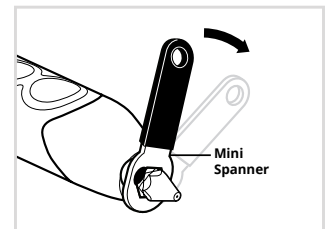
Remove the maintenance cover using a mini screwdriver.



Use a mini screwdriver or unblocking tool to lift and clear the plastic strand from the drive gear through the open area beneath the maintenance cover or from the plastic loading port.

**4. Plastic is leaking from around the nozzle**

The nozzle may loosen with continued usage (or in transit). While the pen is hot (BLUE or GREEN LED Light is on), gently turn the nozzle clockwise to tighten it using the mini spanner. Stop tightening once you first feel resistance so as to avoid over-tightening the nozzle and breaking it.



**5. Plastic won't stop extruding**

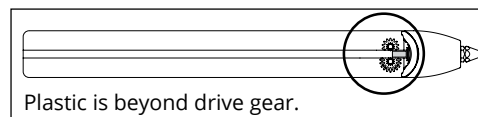
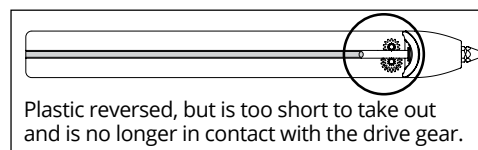
**5A.** Click either speed button once.

**5B.** If the pen keeps extruding, disconnect it from the power supply and then plug it in and try again.

**6. I reversed the plastic but can't get it out**

It is possible that the plastic is either too short to reverse all the way out of your pen, or that the plastic has moved past the pen's drive gear system.

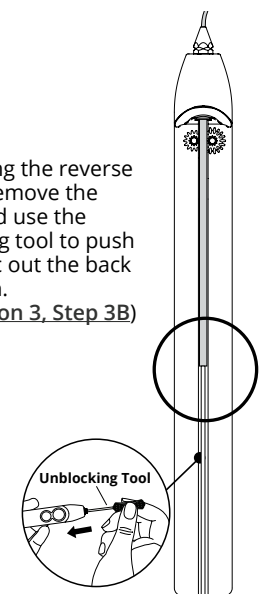
You can check for these issues by looking through the maintenance cover.



For both of these issues, you can try the following options:

**7A.** While the pen is ON and extruding, insert a new strand of plastic or use the unblocking tool to push the remaining plastic through the nozzle tip.

**7B.** While using the reverse feature, remove the nozzle and use the unblocking tool to push the plastic out the back of the pen. (See Section 3, Step 3B)



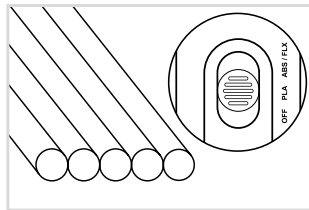
7.  
**My Pen won't heat up (LED light stays red)**

It takes around 60-90 seconds for your pen to heat up. If, after that time, the pen still does not heat up and the LED light remains **RED**, turn the Pen OFF and back ON and try again. If that still does not work, please contact us at [help@the3Doodler.com](mailto:help@the3Doodler.com) and we will assist further.

**SECTION 4: TIPS AND BEST PRACTICES**

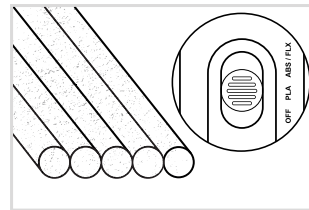
**Pay attention to filament types and settings**

- For optimal Doodling, we suggest using the correct temperature settings for your plastic.
- Double check which type of plastic you are using before you set your pen to the correct temperature setting (**PLA** or **ABS/FLX**). If your plastic strands get mixed up, here is a handy table for sorting and identifying what you're working with.
- For more detailed information on filament types, visit our FAQ: [learn.the3Doodler.com/faqs/](https://learn.the3Doodler.com/faqs/).



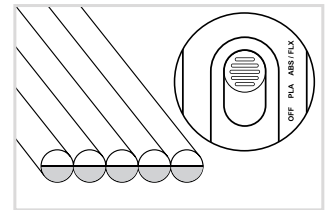
**PLA:**

**Temp:** PLA Temp  
**LED Light:** **GREEN**  
**Feature:** Glossy plastic sticks to fabric, windows, metal and other hard surfaces.  
**How to tell:** Very rigid, no white semi-circle ends.



**WOOD:**

**Temp:** PLA Temp  
**LED Light:** **GREEN**  
**Feature:** Great for embellishing wood projects, this plant-based material can be sanded and stained!  
**How to tell:** Real wood fibers give the strands a rough texture.



**ABS:**

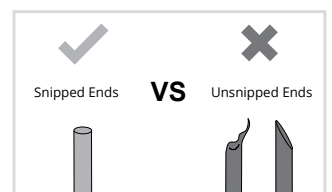
**Temp:** ABS / FLX Temp  
**LED Light:** **BLUE**  
**Feature:** Extruded plastic has a matte finish. Great for drawing in the air.  
**How to tell:** Plastic has white semi-circle ends.

**Switching between filament types**

- If you go from **PLA** to **ABS**, after clearing as much of the **PLA** as you can, adjust the filament setting on the pen to **ABS/FLX**, and then load in your **ABS** strand and start extruding.
- If you're going from **ABS** to **PLA**, after clearing as much of the **ABS** as you can, insert a strand of **PLA** and begin extruding while still on the **ABS/FLX** setting. As soon as you see your new material extruding out, set the temperature to the proper **PLA** setting.

**Do not forget to snip your Plastic ends**

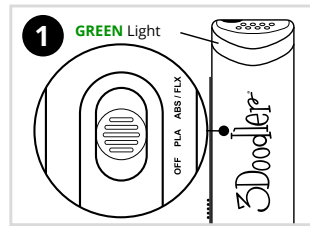
- After removing a strand of plastic from the 3Doodler Create+, cut and discard any partially melted material at the end of the strand. This will reduce blockages or clogging issues.



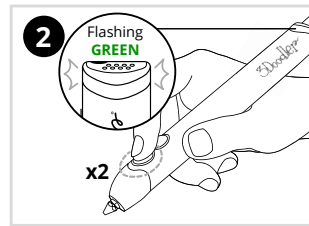


## Reverse and remove plastic correctly

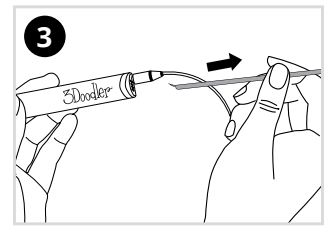
- DO NOT pull plastic from the back of the 3Doodler Create+ other than as directed.



With the Pen set to **PLA** wait for the **GREEN** light to come on.



Double click either speed button and the LED light will start flashing to signal the plastic is reversing.



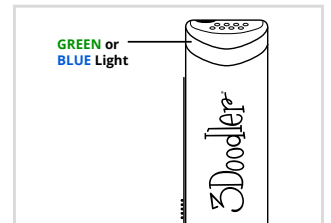
Once the Plastic stops reversing, it is safe to remove it from the pen by gently pulling on the back of the strand.

## TAKE A BREAK:

Give your 3Doodler Create+ a rest after every 2 hours of continuous Doodling. 30 minutes of down time should be plenty.

## Treat your Nozzle right

- If you ever remove your nozzle, **ONLY** remove the nozzle when your pen is heated and a **BLUE/ GREEN** light is showing. **DO NOT** remove it when your 3Doodler Create+ is cold.
- If you ever need to tighten your Nozzle, **DO NOT** force the Nozzle or overtighten it, as you could break the Nozzle and permanently damage your 3Doodler Create+.



Specifications are subject to change and improvement without notice.

**SPECIFICATION OF POWER ADAPTER**  
Input: 100-240V AC, 0.5A MAX, 50-60Hz  
Output: +5V DC, 1.2A



**LIMITED WARRANTY**  
For more details on your limited warranty, please visit: [the3Doodler.com/warranty](https://www.the3Doodler.com/warranty)  
For 3Doodler's Terms and Conditions and other notices please refer to our **website: the3Doodler.com/terms-and-conditions**



This marking indicates that this product should not be disposed of with other household wastes. To prevent possible harm to the environment or human health from uncontrolled waste disposal, recycle it responsibly to promote the sustainable reuse of material resources.

**CARE & MAINTENANCE**  
For care and maintenance information, and more advice on how to use your 3Doodler Create+, please refer to our website: [the3Doodler.com](https://www.the3Doodler.com) To troubleshoot, please visit: [the3Doodler.com/troubleshooting](https://www.the3Doodler.com/troubleshooting)

This device complies with Part 15 of the FCC Rules. Operation is subject to the following two conditions: (1) this device may not cause harmful interference, and (2) this device must accept any interference received, including interference that may cause undesired operation.

**Warning:** Changes or modifications to this unit not expressly approved by the party responsible for compliance could void the user's authority to operate the equipment.

**NOTE:** This equipment has been tested and found to comply with the limits for a Class B digital device, pursuant to Part 15 of the FCC Rules. These limits are designed to provide reasonable protection against harmful interference in a residential installation. This equipment generates, uses and can radiate radio frequency energy and, if not installed and used in accordance with the instructions, may cause harmful interference to radio communications. However, there is no guarantee that interference will not occur in a particular installation. If

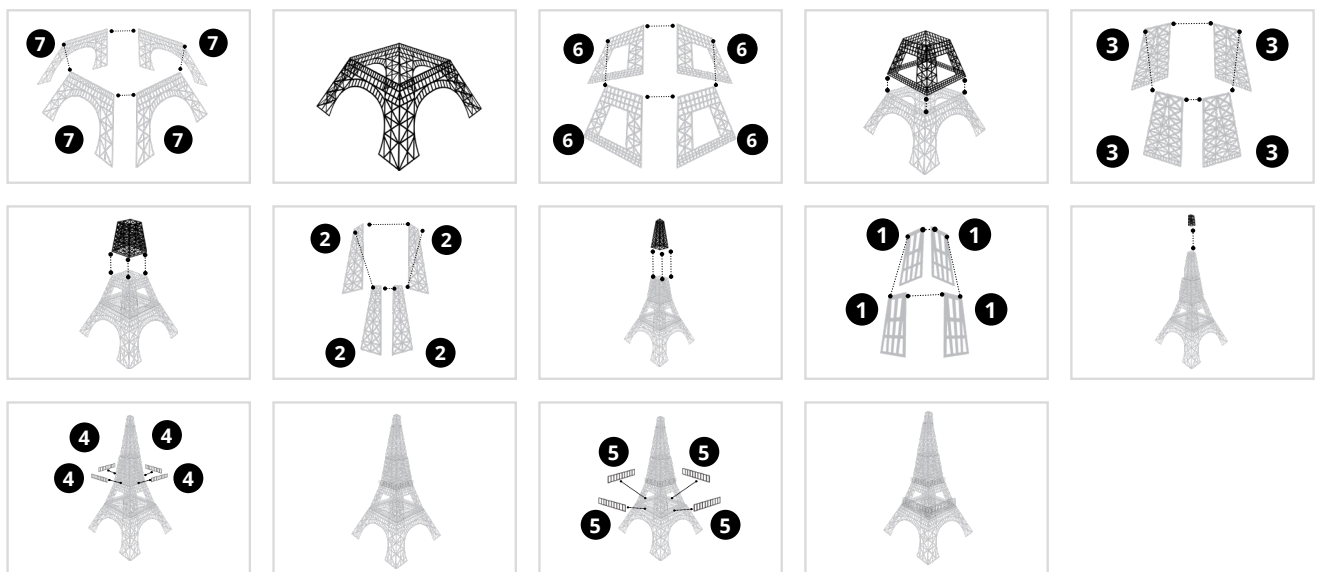
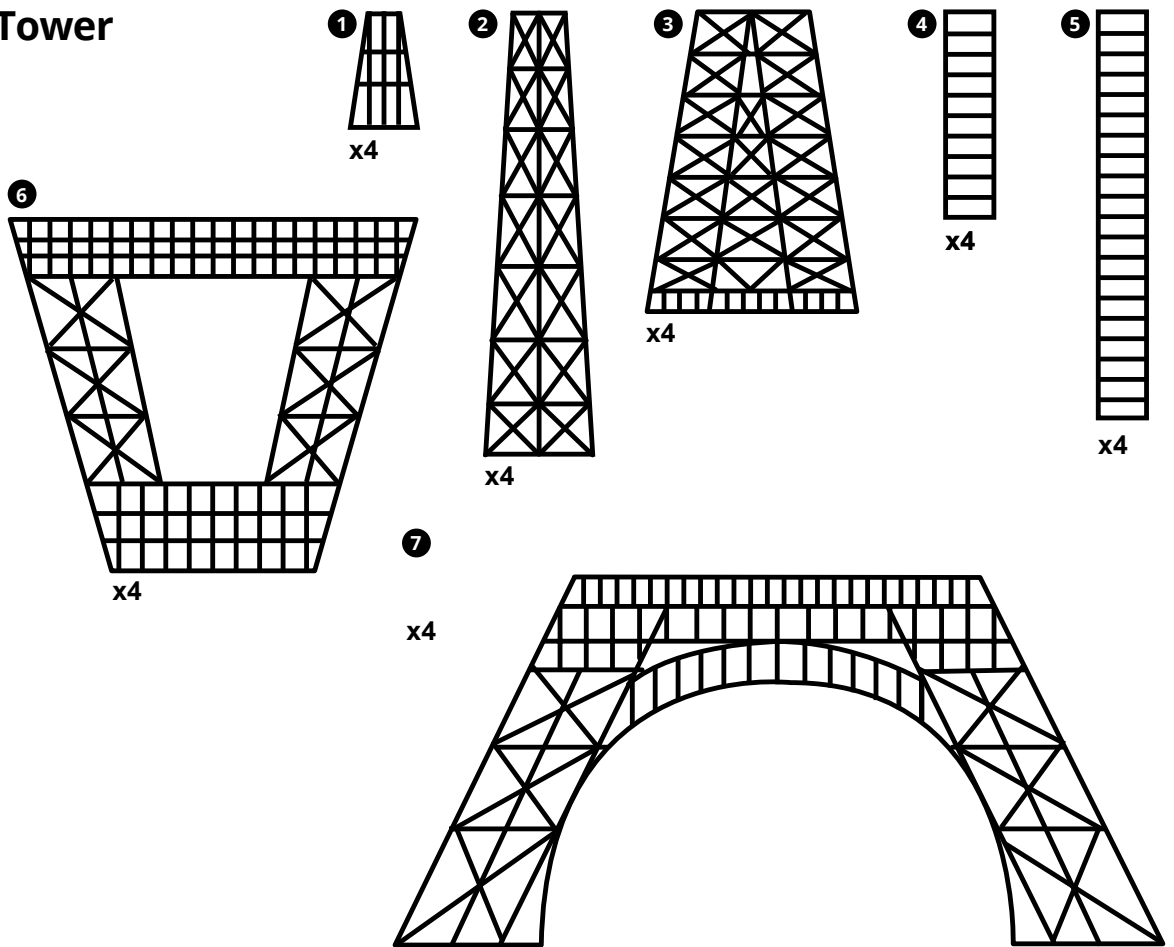
this equipment does cause harmful interference to radio or television reception, which can be determined by turning the equipment off and on, the user is encouraged to try to correct the interference by one or more of the following measures:

- Reorient or relocate the receiving antenna.
- Increase the separation between the equipment and receiver.
- Connect the equipment into an outlet on a circuit different from that to which the receiver is connected.
- Consult the dealer or an experienced radio/ TV technician for help.

CAN ICES-3 (B)/NMB-3(B)

SECTION 5: STENCILS

Eiffel Tower



# Glasses

